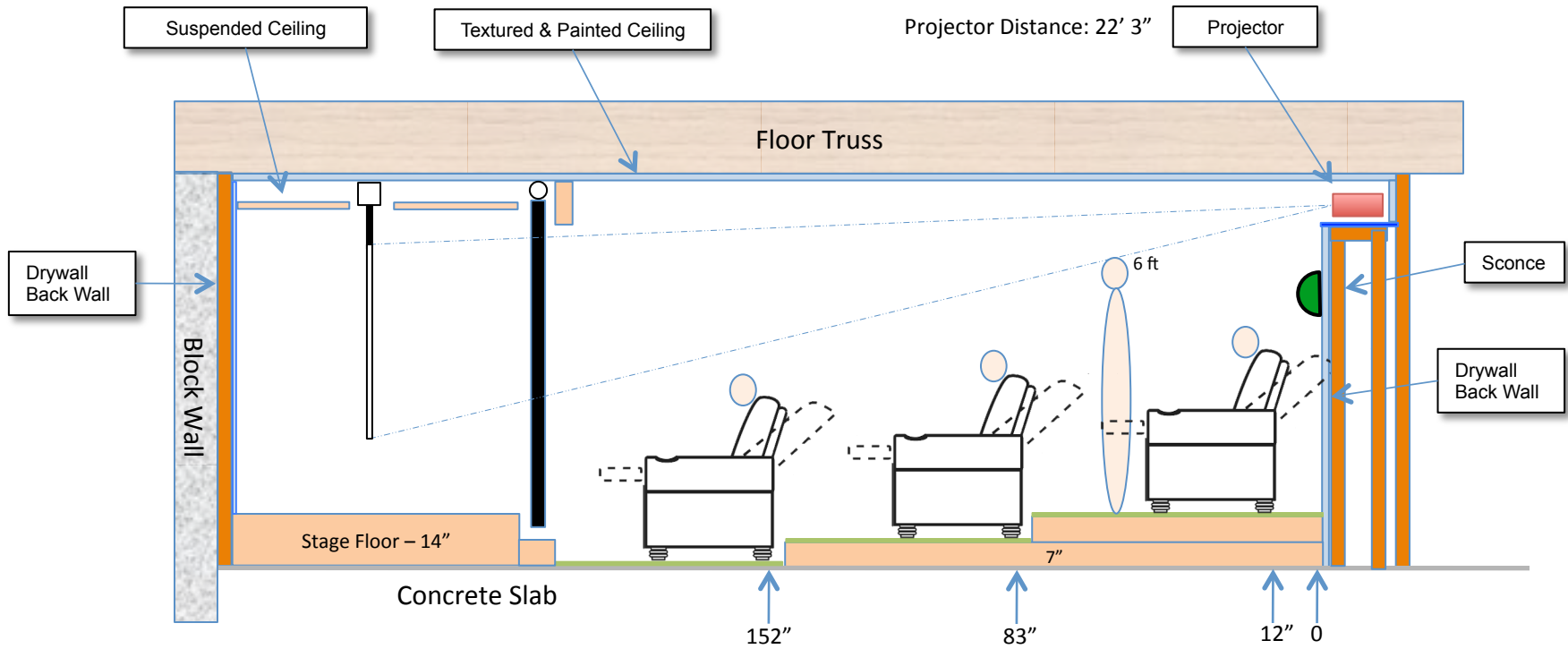


Floor Plan

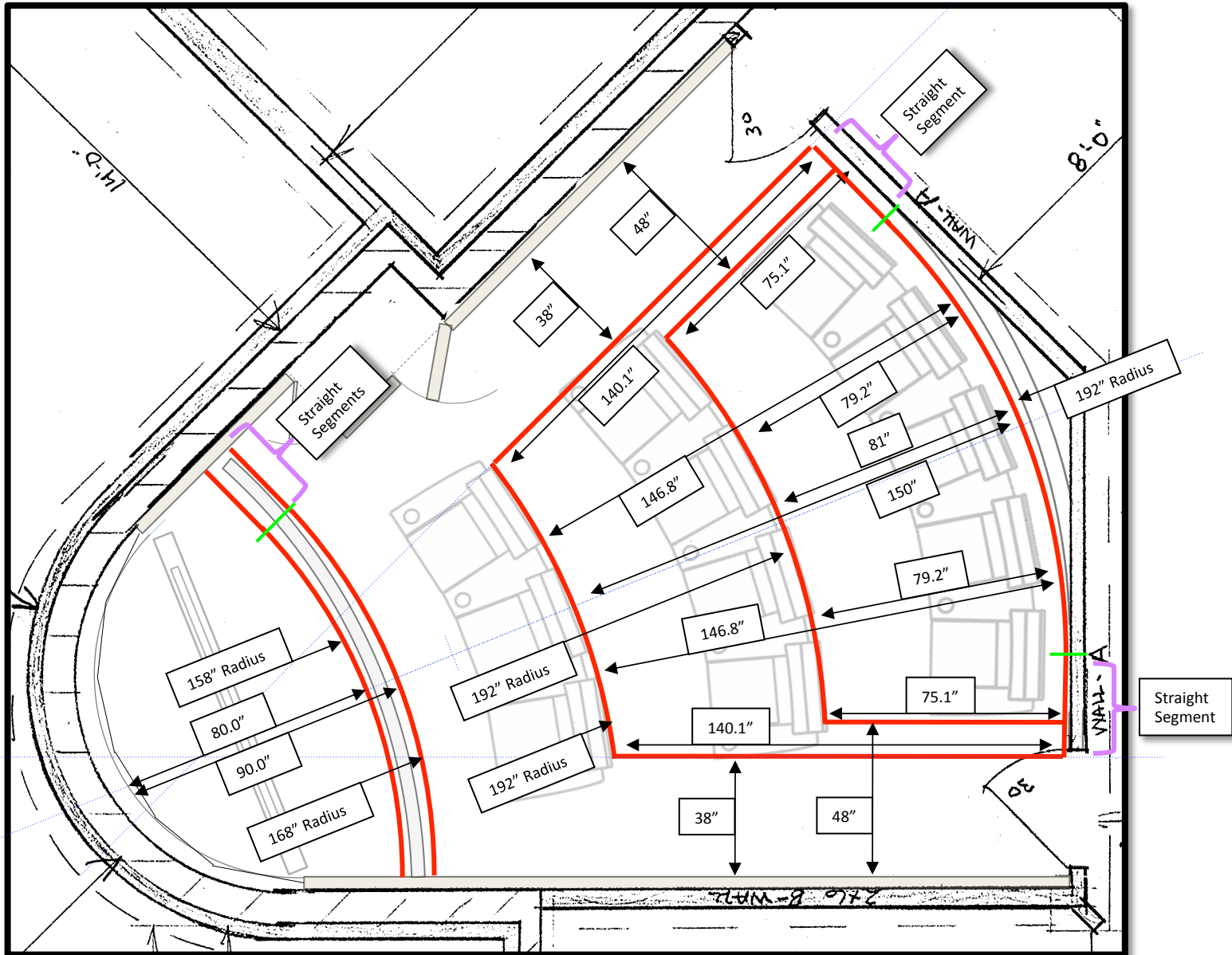
Screen: 92" x 52"  
 Seats: Bass "Showtime"  
 Projector: BenQ W6000 (16 ft)  
 Main Speaker: Polk Audio RTIA9



Centerline Cross-section

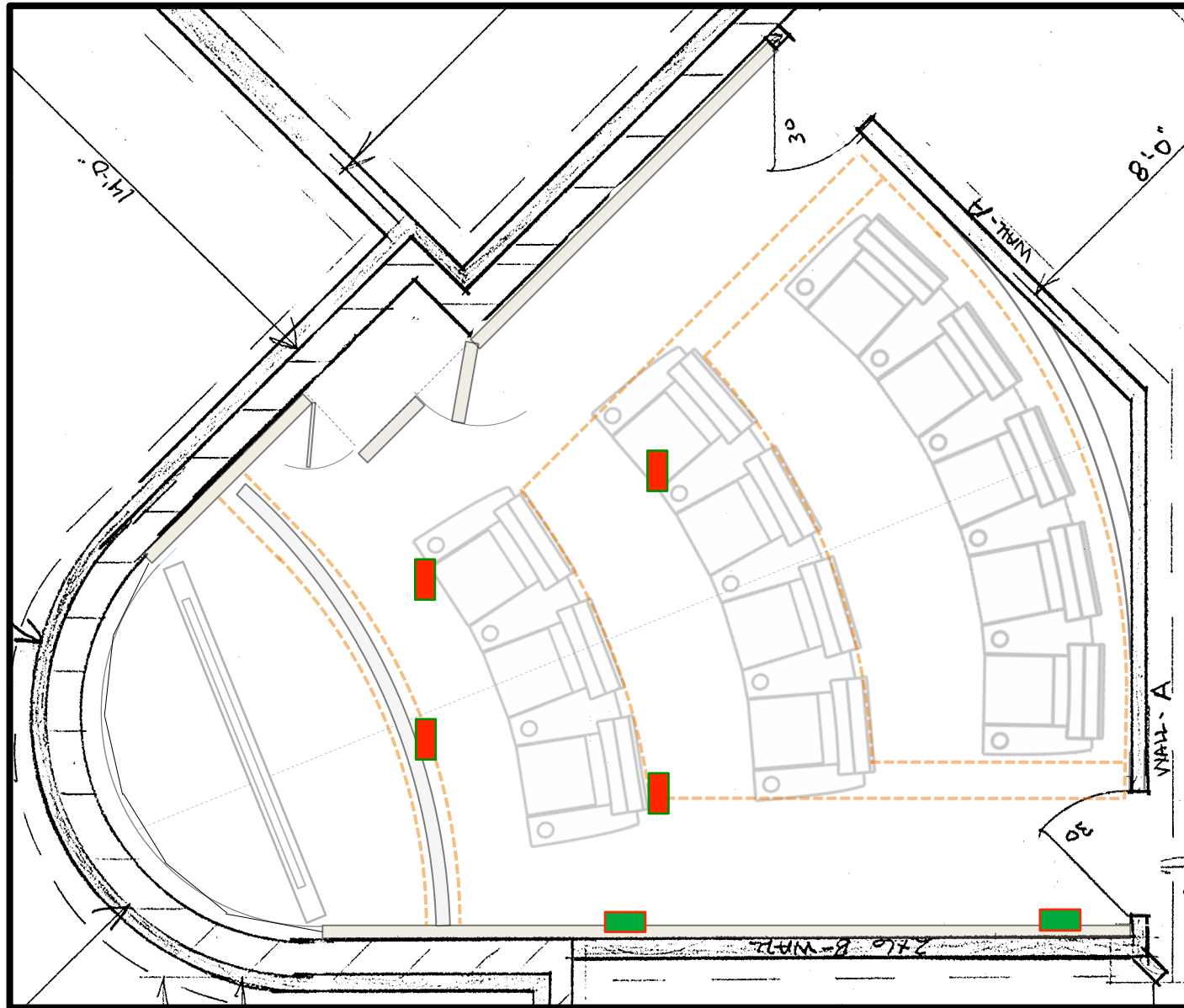
- = Stud Wall
- = 2" Isolated Drywall
- = 1" Acoustic Panel
- = Stage Curtain
- = Carpet
- = Isolated Shelf

Back Row Clearance: 12"  
 Center-Seat, Back-Row Space: 38"  
 Center-Seat, Center-Row Space: 36"  
 Recommended: Space: 35"  
 Seat Depth: 33"  
 Bass "Showtime" Loungers



Riser & Stage Dimensions

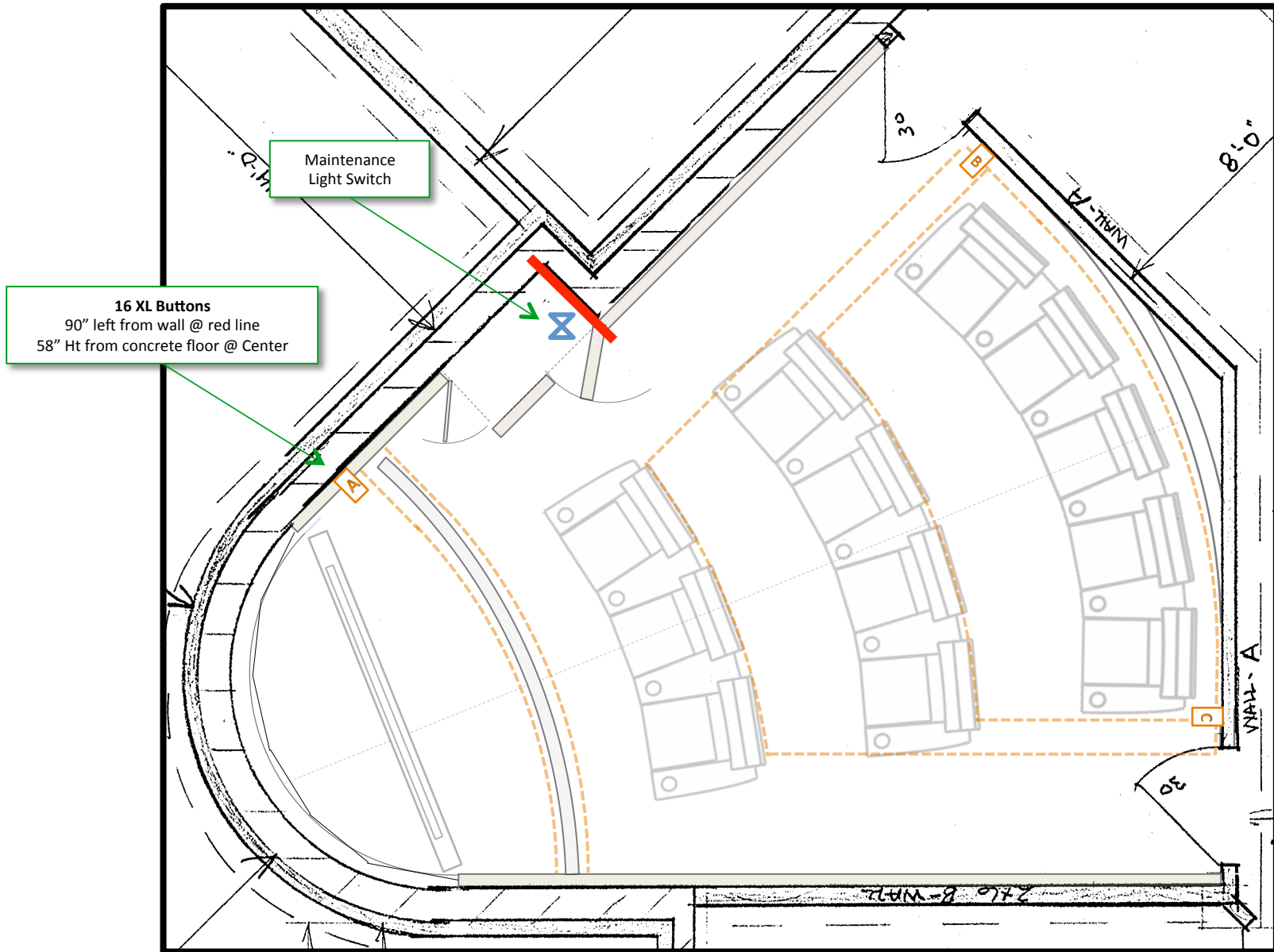
Scale: 4' per inch



■ = Supply Air Duct  
■ = Return Air Duct

Scale: 4' per inch


HVAC Duct Locations



**16 XL Buttons**  
 90" left from wall @ red line  
 58" Ht from concrete floor @ Center

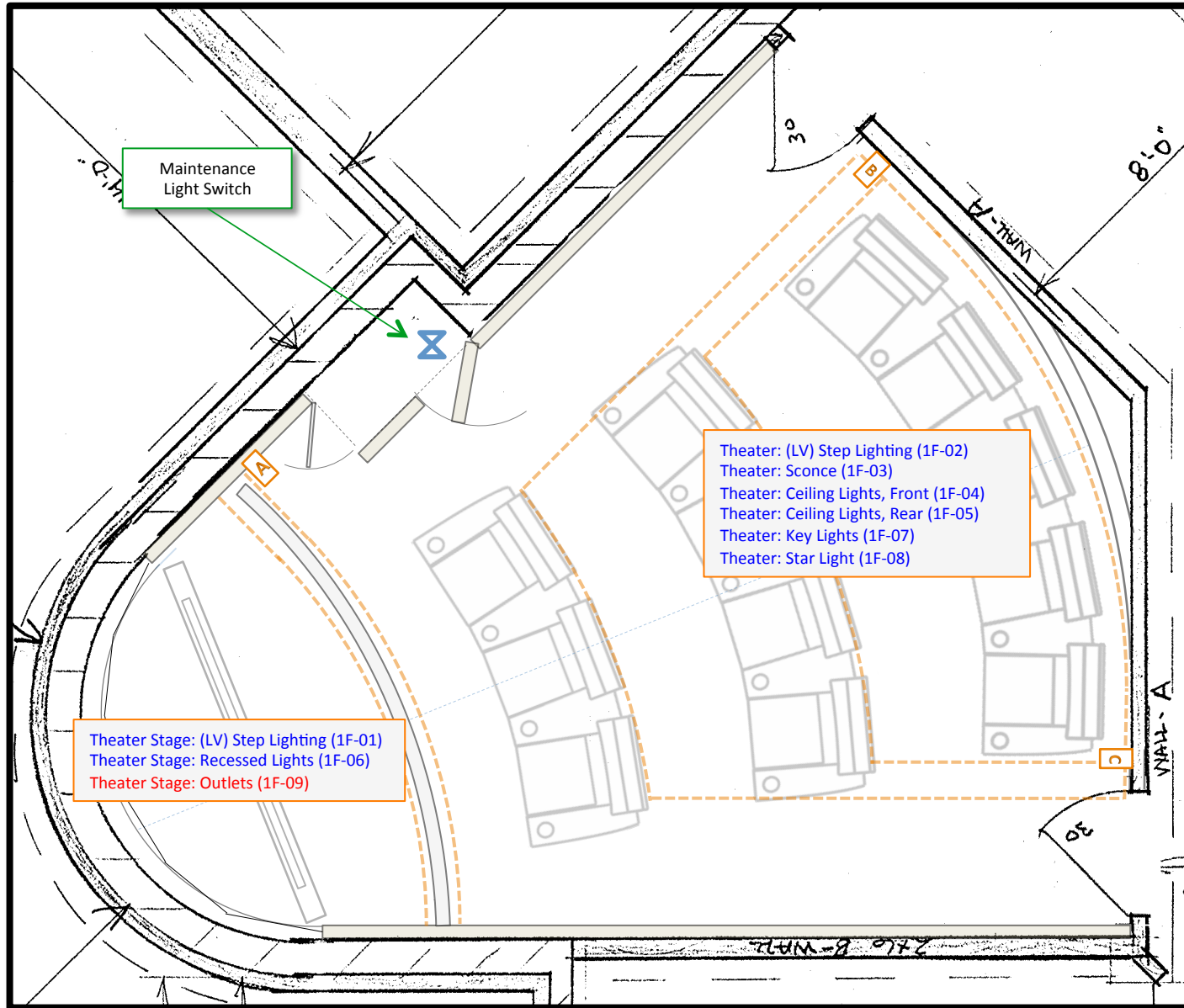
Maintenance  
 Light Switch

 = Switch Cluster

 = Standard Switch


Scale: 4' per inch

Lighting Controls



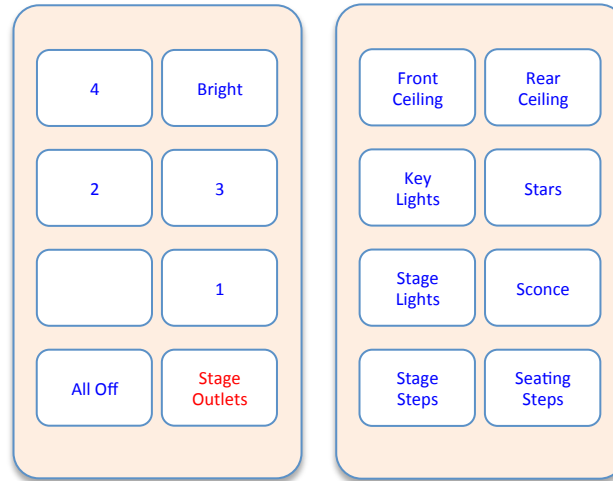
Lighting Controls

 = Switch Cluster

 = Standard Switch

Scale: 4' per inch

### Keypad Location 1F-A Theater, Control Station



Theater: (LV) Step Lighting (1F-02)  
 Theater: Sconce (1F-03)  
 Theater: Ceiling Lights, Front (1F-04)  
 Theater: Ceiling Lights, Rear (1F-05)  
 Theater: Key Lights (1F-07)  
 Theater: Star Light (1F-08)

Theater Stage: (LV) Step Lighting (1F-01)  
 Theater Stage: Recessed Lights (1F-06)  
 Theater Stage: Outlets (1F-09)

Cables  
2 - Green

### Keypad Location 1F-B Theater, Right of North Door









Cables  
1 - Green

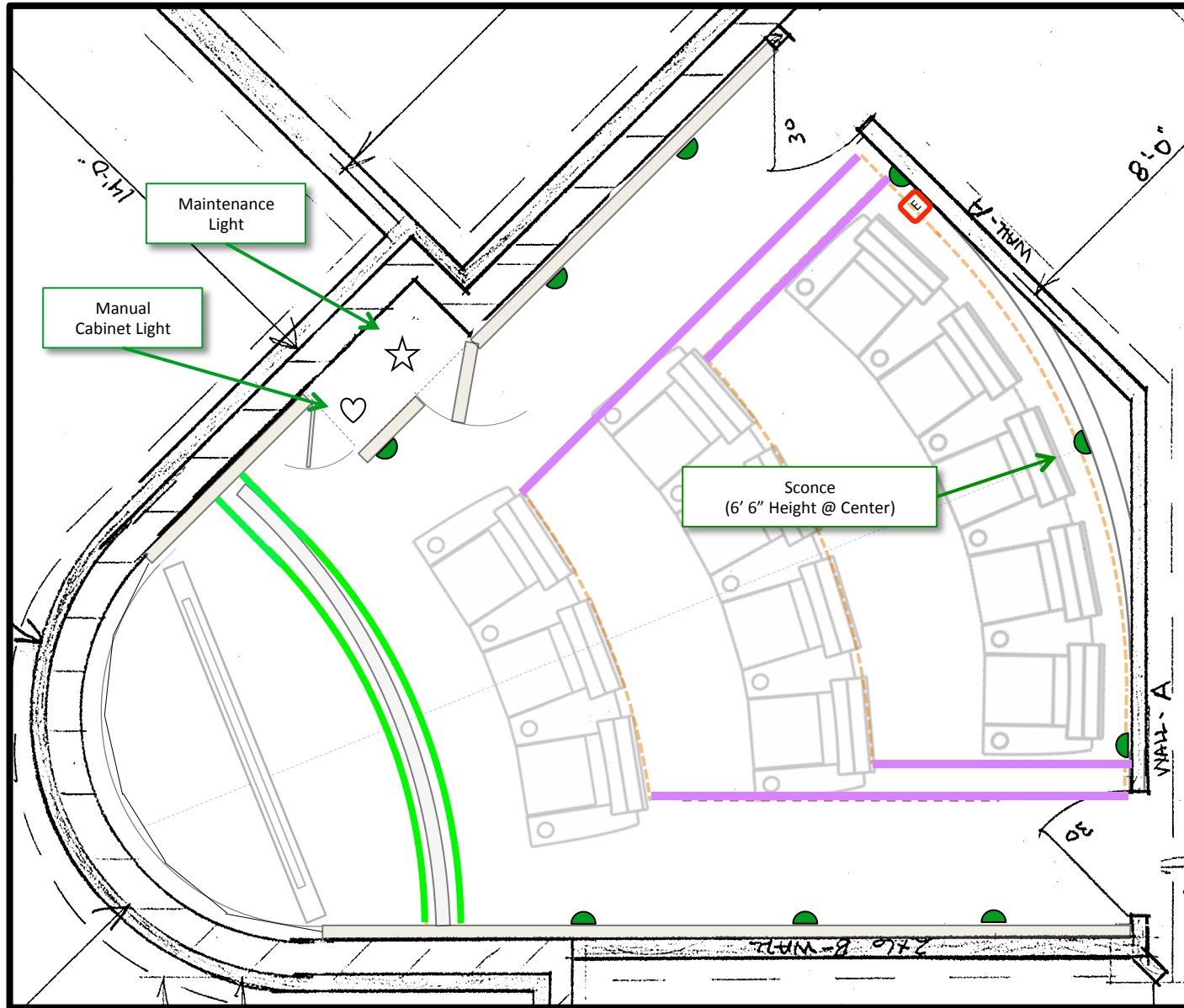
### Keypad Location 1F-C Theater, Left of South Door



Cables  
1 - Green









-  = Tread Lighting (1F-T01)
-  = Tread Lighting (1F-T02)
-  = Sconce (78" ht @ center) (1F-03)
-  = Cabinet Lighting
-  = Closet Lighting
-  = Emergency Light

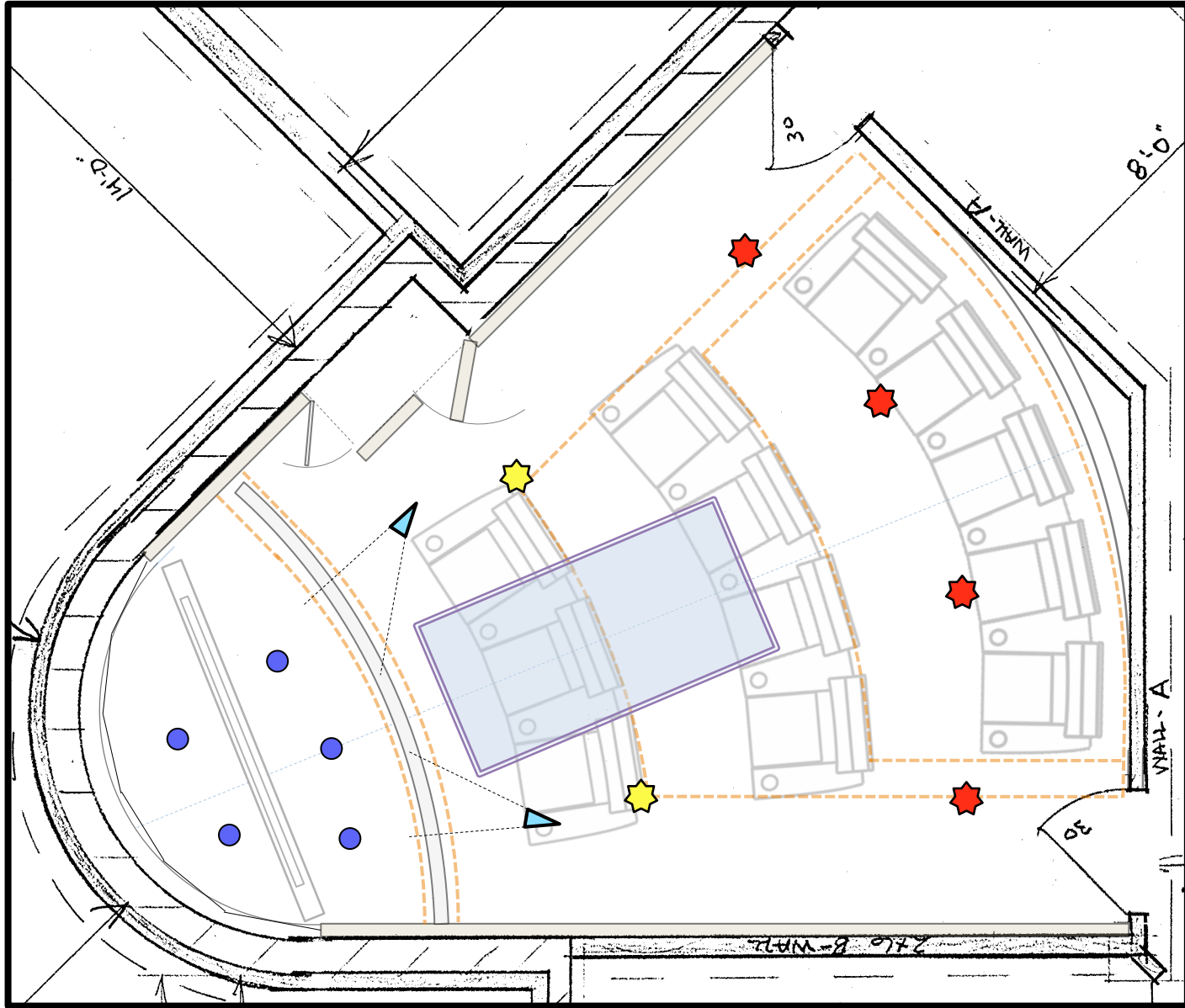


Floor & Wall Lighting

Scale: 4' per inch

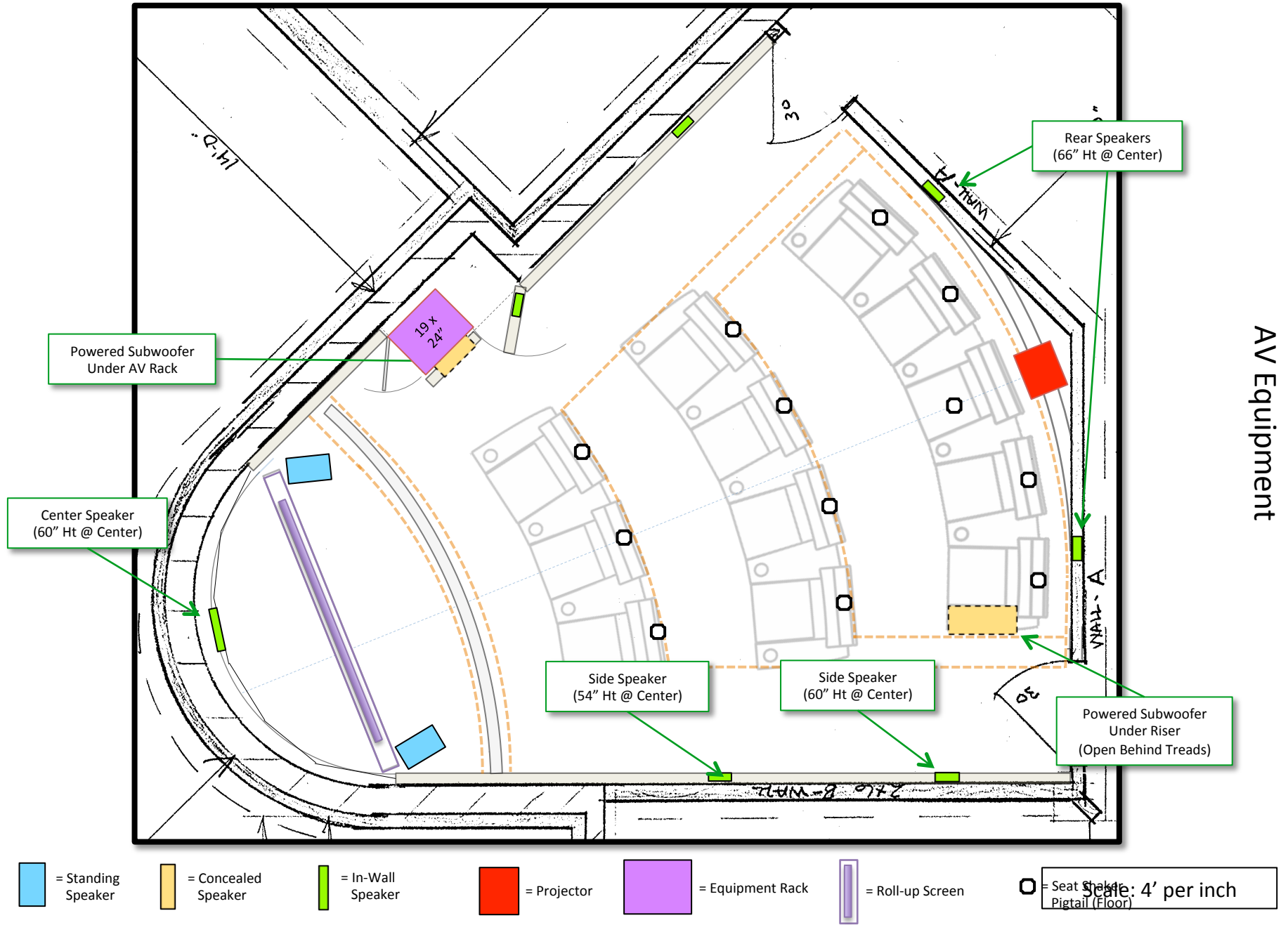


-  = Surface Fixture (1F-04)
-  = Surface Fixture (1F-05)
-  = 4" Recessed Incand (1F-08)
-  = Star Panel (1F-08)
-  = Key Light (1F-07)
-  = Emergency Light

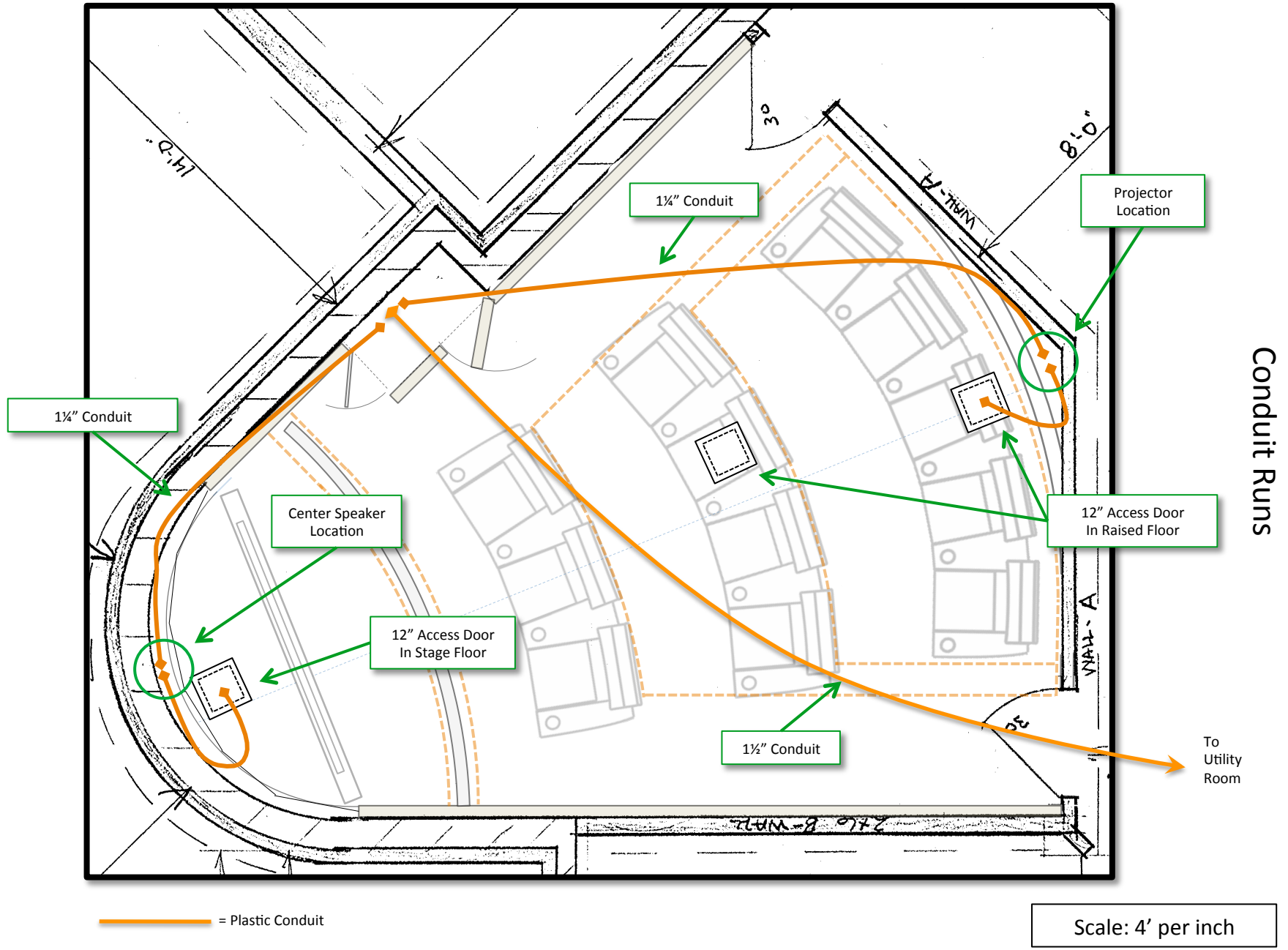


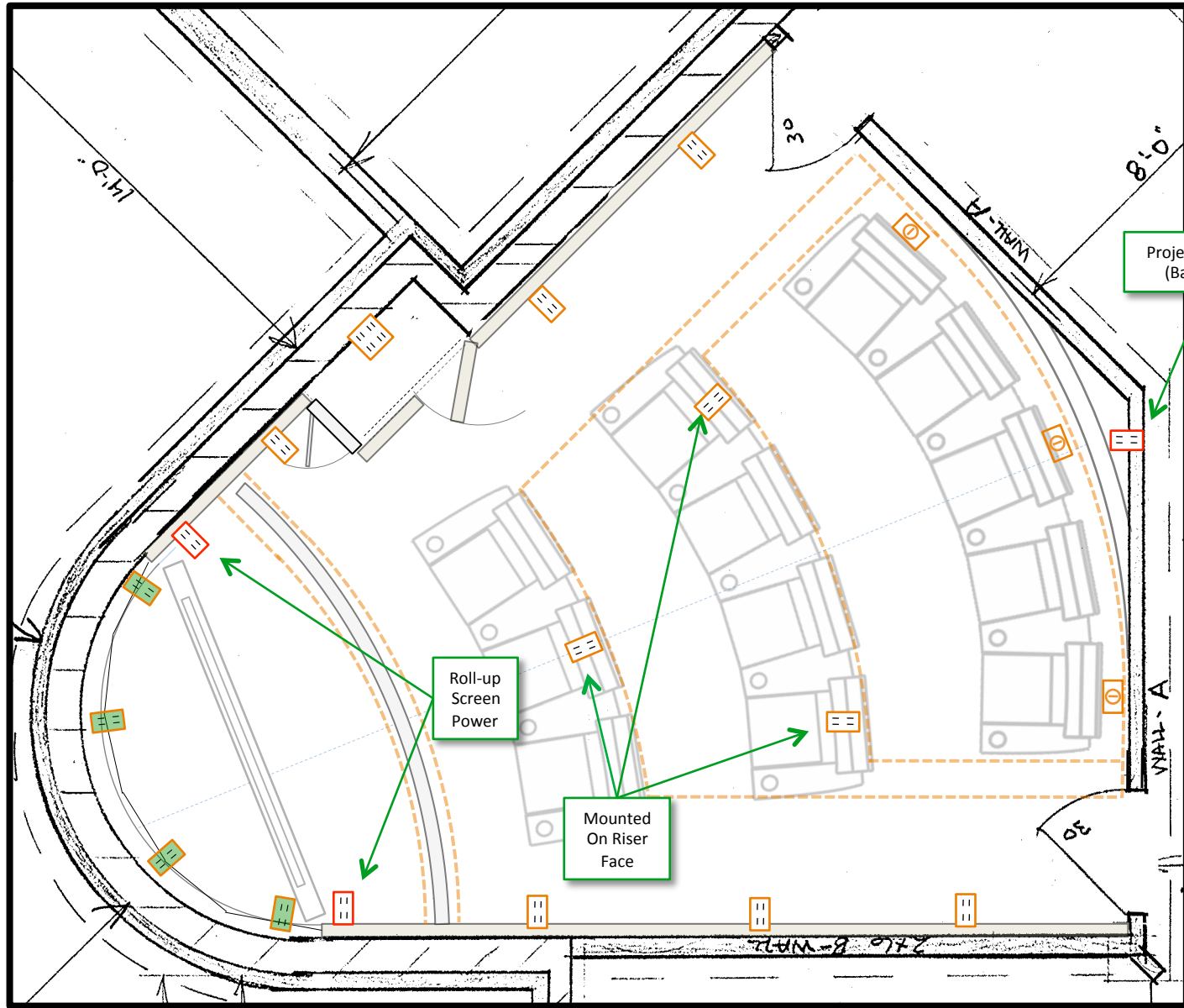
Scale: 4' per inch

Ceiling Lighting



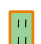



AV Equipment

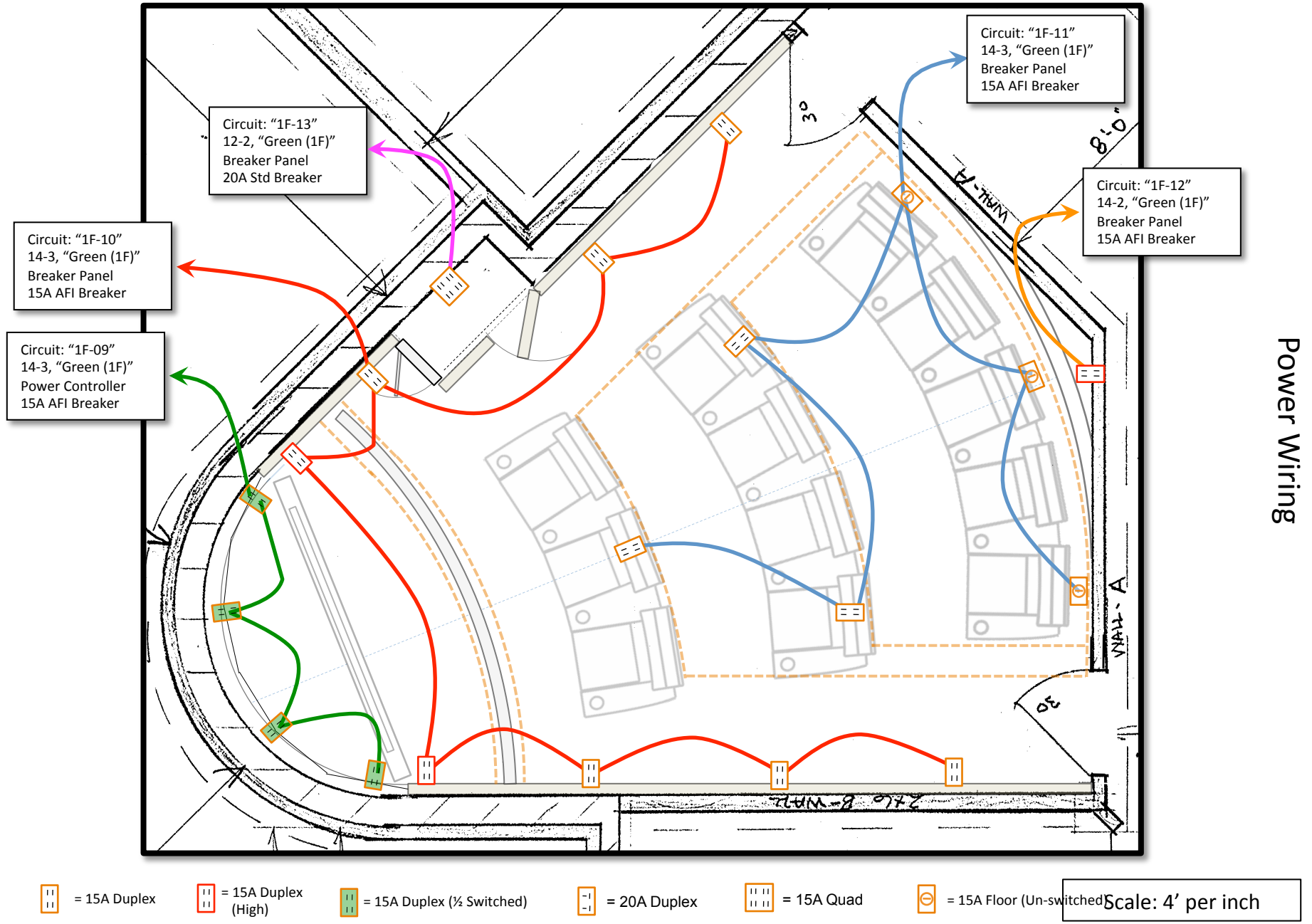




Power

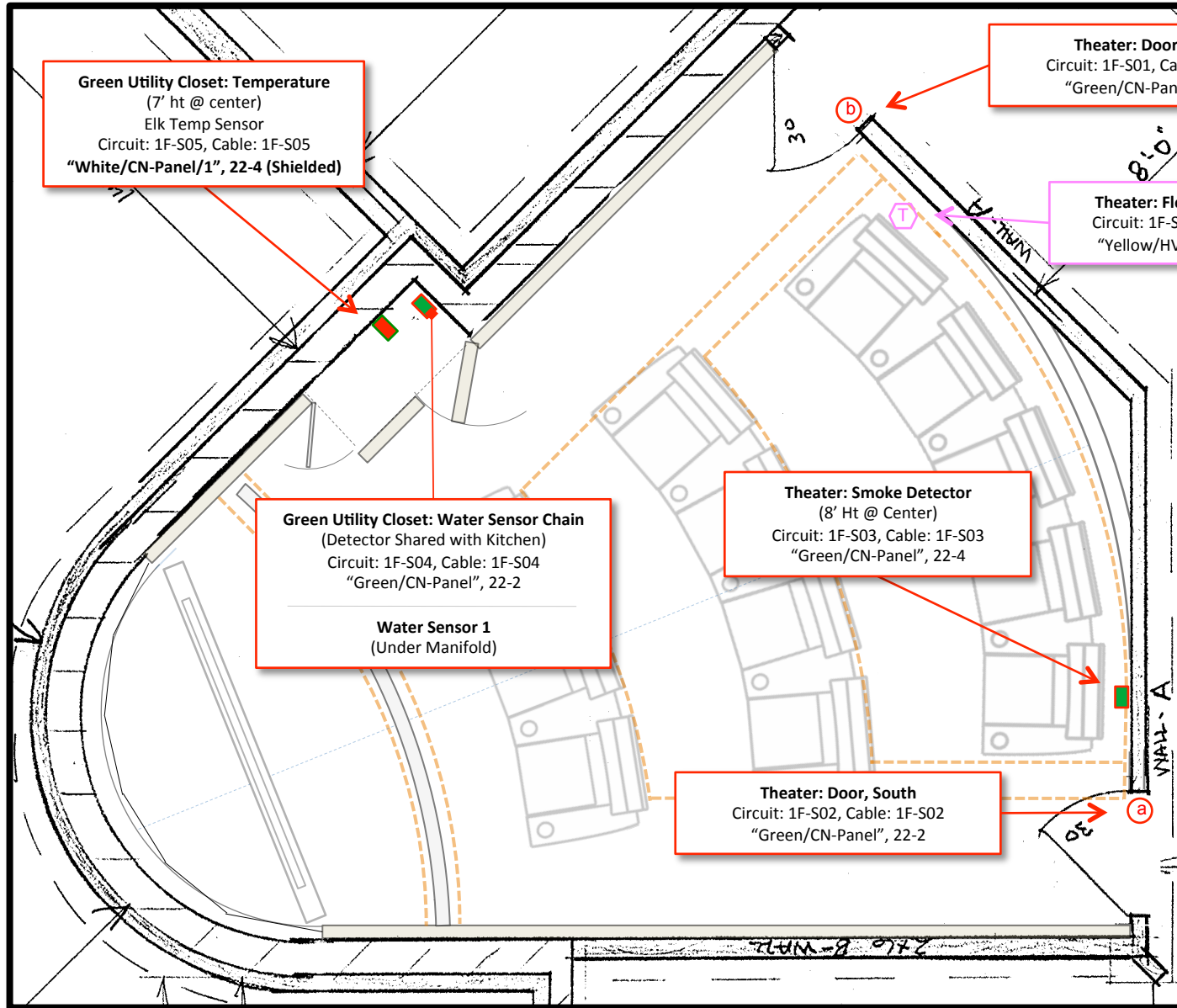
-  = 15A Duplex
-  = 15A Duplex (High)
-  = 15A Duplex (1/2 Switched)
-  = 20A Duplex
-  = 15A Quad
-  = 15A Floor (Un-switched)

Scale: 4' per inch



Power Wiring





Sensors

⊗ = NC Door/Window Sensor  
(Concealed Reed)

Scale: 4' per inch

All LAN & Phone Cables: Cat 6, "Green/CN-Panel"

**Theater: Intercom ("Media Room")**  
 (58" Ht @ Center)  
 OnQ Selective Call  
 Circuit: 1F-C07, Cable: 1F-C07  
 "White/CN-Panel/3", Cat-5e

**Theater: Thermostat**  
 (62" ht @ center)  
 RCS TRS60  
 Circuit: 1F-A03, Cable: 1F-A03  
 "Yellow/HVAC-Group", Cat 5e

**AV Rack**  
**Cable Port "1F-03"**

RF: 1F-R01 (RG-6) (TV Ant)  
 RF: 1F-R07 (RG-6) (FM Ant)  
 RF: 1F-R08 (RG-6) (Sat Ant)  
 RF: 1F-R02 (RG-6) (Spare)  
 "White/CN-Panel/3"

RF: 1F-R03 (RG-6) (DirecTV)  
 "White/E-Rack/3"

**(HE-16)**  
 IR: 1F-R04 (22-4 S)  
 HDMI 1A: 1F-R05 (Cat 6)  
 HDMI 1B: 1F-R06 (Cat 6)  
 "White/E-Rack/1"

LAN: 1F-C05  
 Phone: 1F-C06

**Theater: Video Display**  
 (58" Ht @ Center)  
 Circuit: 1F-C08, Cable: 1F-C08  
 "White/CN-Panel/3", Cat-6

**Theater: Alarm Speaker**  
 Circuit: 1F-A01

**Theater: Alarm Strobe**  
 Circuit: 1F-A02

Cable: 1F-A01/02  
 "White/CN-Panel/1", 18-4

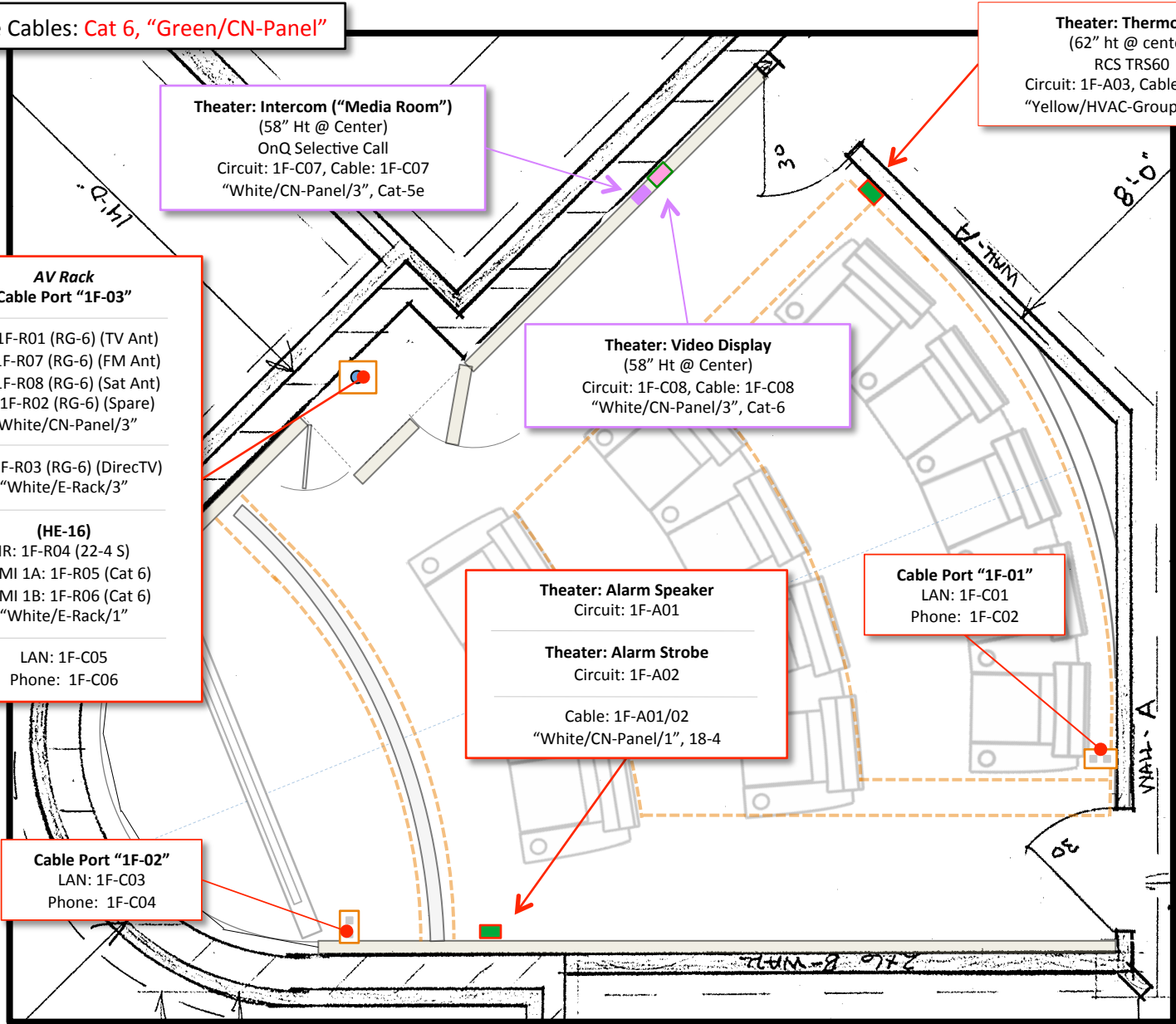
**Cable Port "1F-01"**  
 LAN: 1F-C01  
 Phone: 1F-C02

**Cable Port "1F-02"**  
 LAN: 1F-C03  
 Phone: 1F-C04

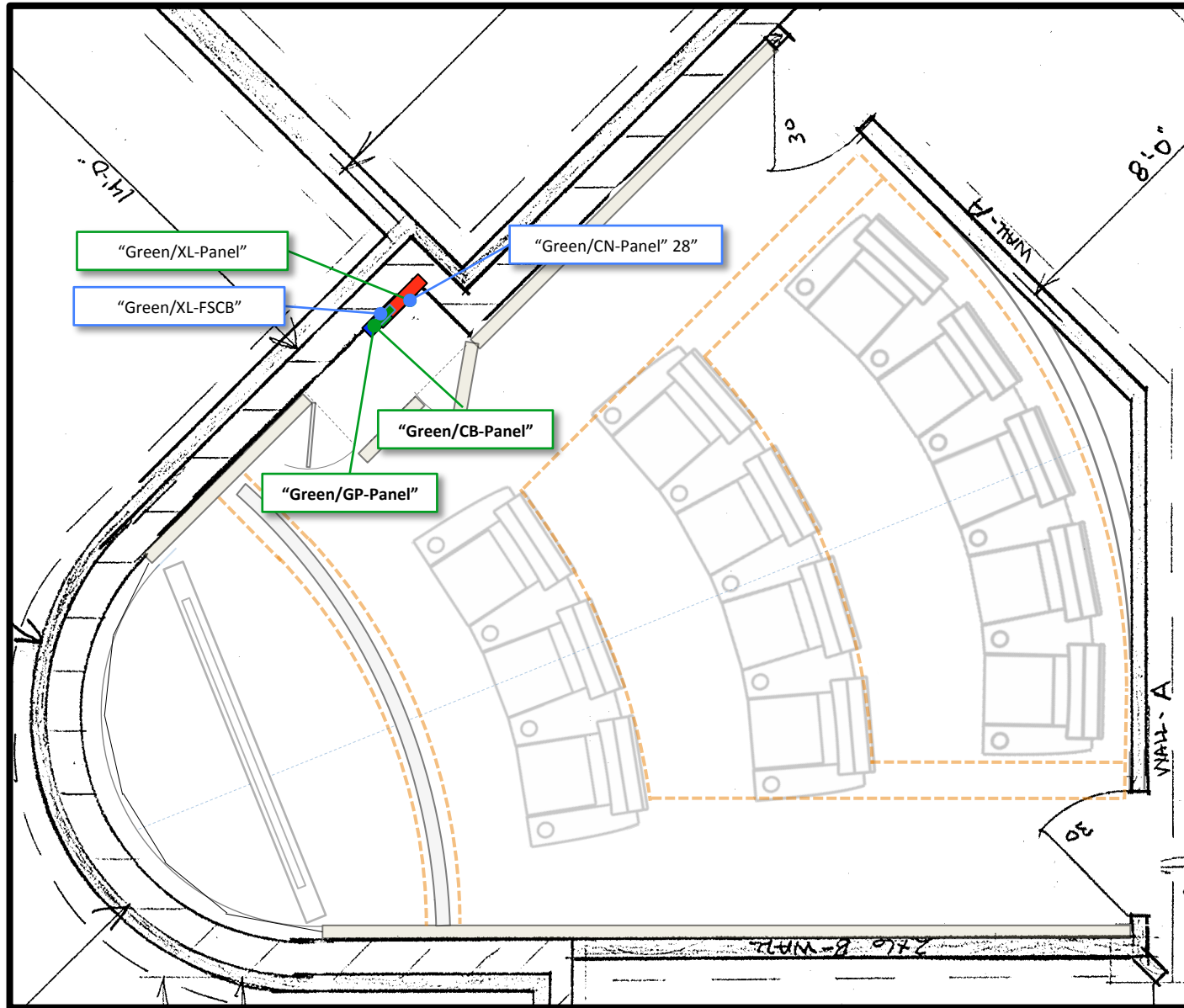
 = LAN / Phone

Scale: 4' per inch

Systems

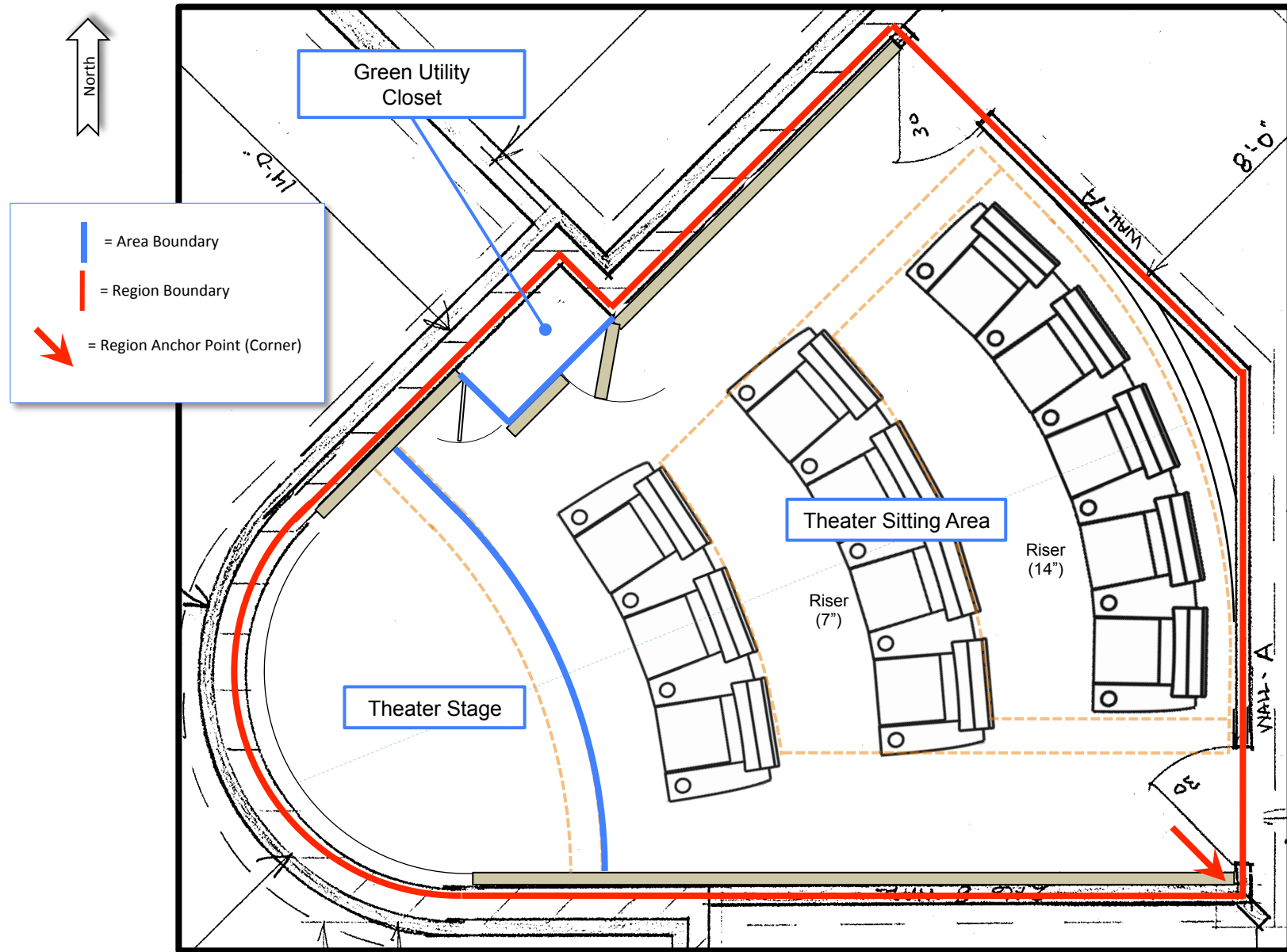


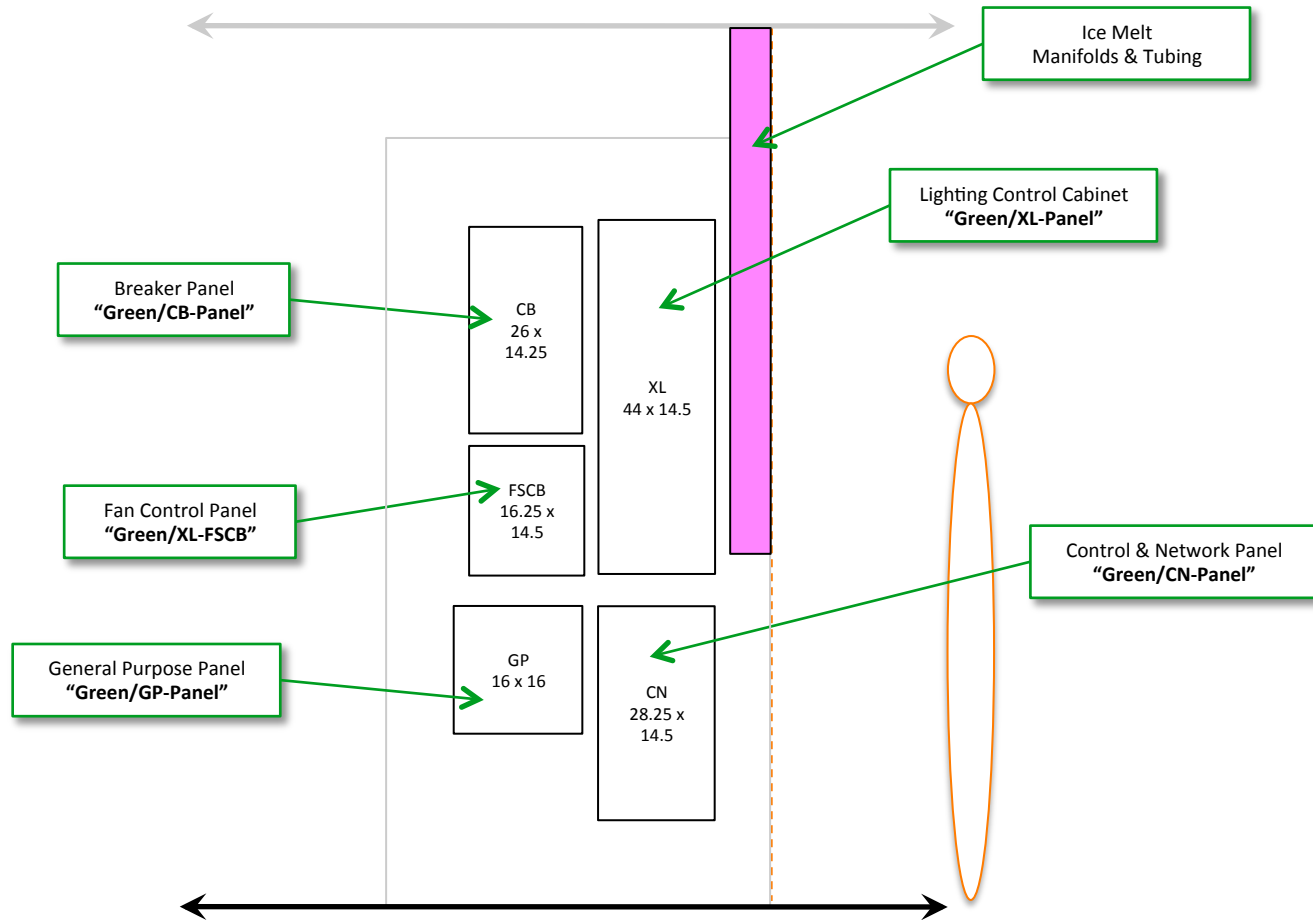




Systems Cabinets

Scale: 4' per inch





Scale: 2' per inch